

Caratteristiche - Features - Merkmale - Caractéristiques - Características
 Χαρακτηριστικά - Características - Kenmerken - Özellikler - Funktionen - Vlastnosti - Vlastnosti



Manuale d'uso, manutenzione e parti di ricambio	Parte 2
Manual for use, maintenance and spare parts	Part 2
Bedienungs- und Wartungshandbuch sowie Ersatzteilliste	Teil 2
Mode d'emploi, de maintenance et pièces de rechange	Partie 2
Manual de uso, mantenimiento y recambios	Part 2
Εγχειρίδιο χρήσης, συντήρησης και ανταλλακτικών	Μέρος 2
Manual de uso, manutenção e peças sobresselentes	Parte 2
Handleiding voor gebruik, onderhoud en wisselstukken	Deel 2
Kullanım, bakım ve yedek parça kılavuzu	Kisim 2
Användar-, underhålls- och reservdelshandbok	Del 2
Návod k používání a údržbě a náhradní díly	Část 2
Návod na obsluhu, údržbu a náhradné diely	Časť 2



92.740

cod. 1747200



Warning: Please read the instructions and warnings for this tool carefully before use. Failure to do so could lead to serious injury.

Dati tecnici
Technical data
Technische Daten
Tekniska data

Caractéristiques techniques
Datos técnicos
Τεχνικά χαρακτηριστικά
Technické údaje

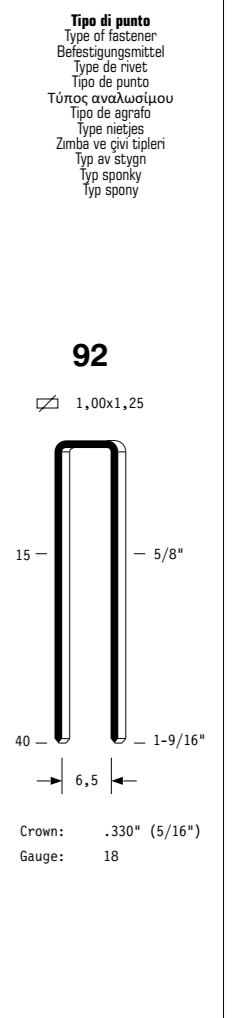
Dados técnicos
Technische gegevens
Teknik veriler
Technické údaje

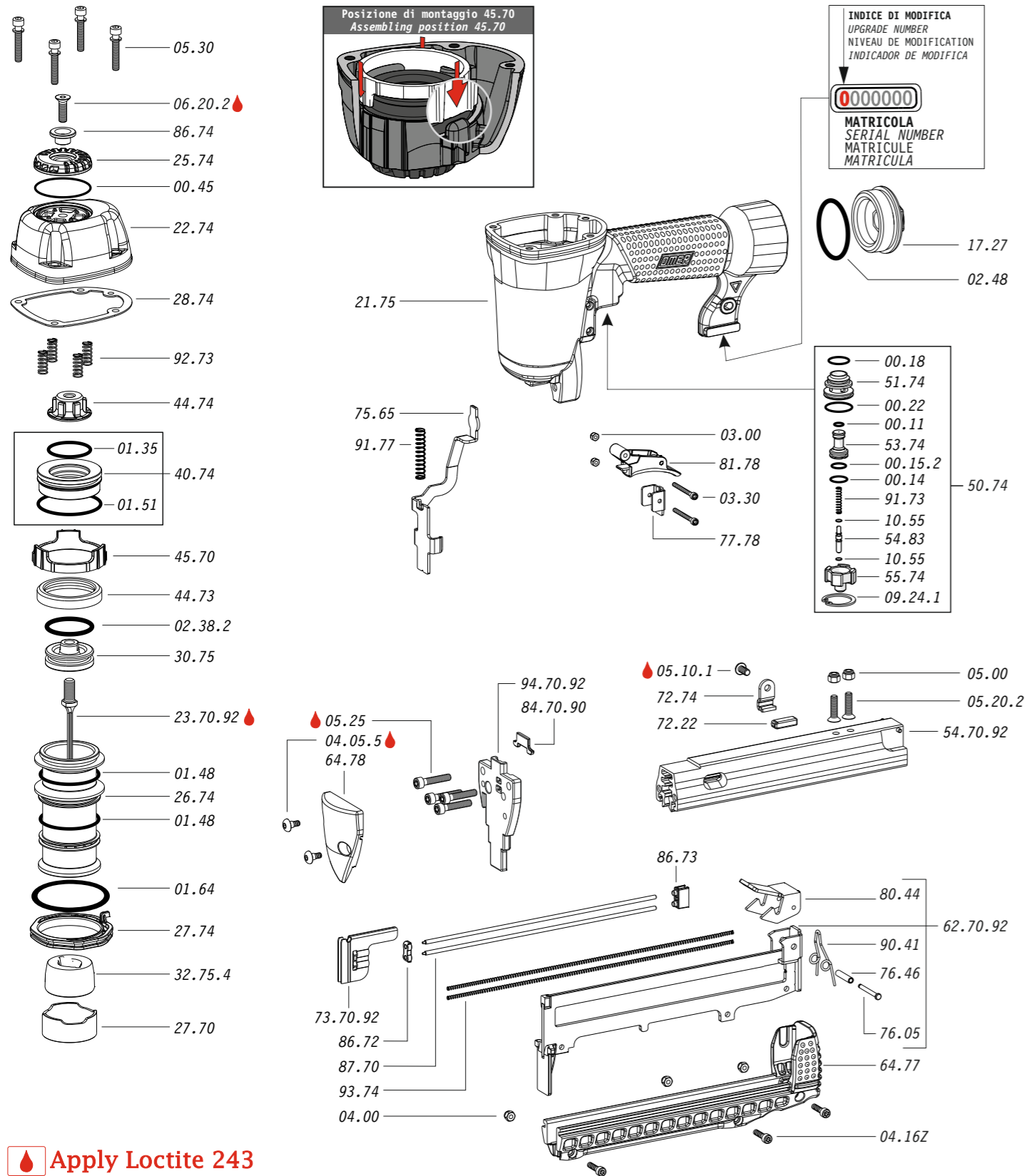
Misure impiegabili	Dimensions utiles	Medidas utilizáveis	mm	15+40
Lengths	Medidas de longitud	Toepasbare afmetingen	inch	5/8"÷1-9/16"
Verwendbare Nagellänge	Μήκος Αναλωσίμου	Boy		
Dimensioner som kan användas	Prípustné rozměry	Použitelné rozmery		
Capacità caricatore n° punti	Capacité chargeur n° de points	Capacidade carregador n° pontos		110
Magazine capacity	Capacidad cargador n° puntos	Capaciteit magazijn in aantal spijkers		
Magazinkapazität Nägel	Δυνατότητα γεμιστέρα	Dergi kapasitesi		
Magasinkapacitet Antal punkter	Kapacita zásobníku p. sponek	Kapacita zásobníka p. spon		
Pressione d'esercizio	Pression d'exercice	Pressão de serviço	bar	5÷7,5
Operating pressure	Presión de servicio	Werkdruk	psi	70÷105
Betriebsdruck	Πίεση λειτουργίας	Çalışma basıncı		
Driftryck	Pracovní tlak	Prevádzkový tlak		
Consumo aria	Consumation d'air	Consumo ar	lt/colpo	0,75
Air consumption	Consumo aire	Luchtverbruik	ft ³ /cycle	0,0264
Luftverbrauch	Κατανάλωση αέρα	Hava tüketimi		
Luftförbrukning	Spotřeba vzduchu	Spotřeba vzduchu		
Peso	Poids	Peso	kg	1,91
Weight	Peso	Gewicht	lbs	4,21
Gewicht	Βάρος	Ağırlık		
Vikt	Hmotnost	Hmotnost		
Dimensioni	Dimensions	Dimensões	mm	270x77x254
Dimensions	Dimensiones	Afmetingen	inch	10-5/8"x3-1/32"x10"
Abmessungen	Διαστάσεις	Boyutlar		
Dimensioner (AxBxH)	Rozměry	Rozměry		(LxWxH)

EN 12549 :2009 EN ISO 4871 :2009	Pressione sonora in pos. operatore	Pression sonore poste Opérateur	Pressão sonora na posição Operador	dB(A)	87
	Sound pressure in operator's position	Presión sonora en la pos. del operador	Geluidsdruk op de werkplaats		
	Schalldruck am Arbeitsplatz	Ηχητική πίεση στη θέση του χειριστή	Operatör pozisyonunda ses basıncı		
	Ljudtryck på operatörsplatsen	Akustický tlak v místě obsluhy	Akustický tlak v mieste obsluhy	(K= 4 dB)	

EN 12549 :2009 EN ISO 3746 :2011 EN ISO 4871 :2009	Potenza sonora emessa	Puissance sonore émise	Potência sonora emitida	dB(A)	96
	Sound power emitted	Potencia sonora emitida	Geëmitteerd geluidsvermogen		
	Emittierte Schalleistung	Εκπεμπόμενη ηχητική ισχύς	Çıkan ses gücü (ses desibeli)		
	Avgiven ljudeffekt	Emitovaný akustický tlak	Výstupný akustický výkon	(K= 4 dB)	

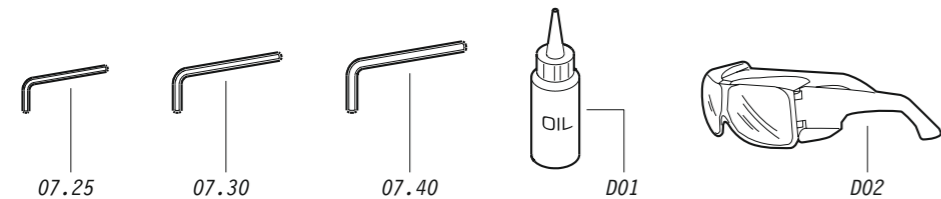
CEN ISO/TS 8662-11 :2006 EN ISO 5349-2 :2004 EN 12096 :1999	Emissione vibratoria sull'impugnatura	Émission vibratoire sur la prise en main	Emissão vibratória na empunhadura	m/s ²	3,21
	Vibratory emissions on handle	Emisión de vibraciones en la empuñadura	Trillingsemisje op de handgreep		
	Vibrationsemission am Griff	Εκπεμπόμενες δονήσεις στη λαβή	Tutamak üzerindeki vibrasyon emisyonları		
	Vibrationsemission på handtaget	Emise vibrací na rukojet	Emisie vibrácií na rukoväti	(K= 2 m/s ²)	





Apply Loctite 243

Dotazioni - Equipment - Ausstattung - Outillage - Dotaciones - Εξοπλισμός
Dotações - Uitrusting - Donanımlar - Utrustning - Vybavení - Vybava

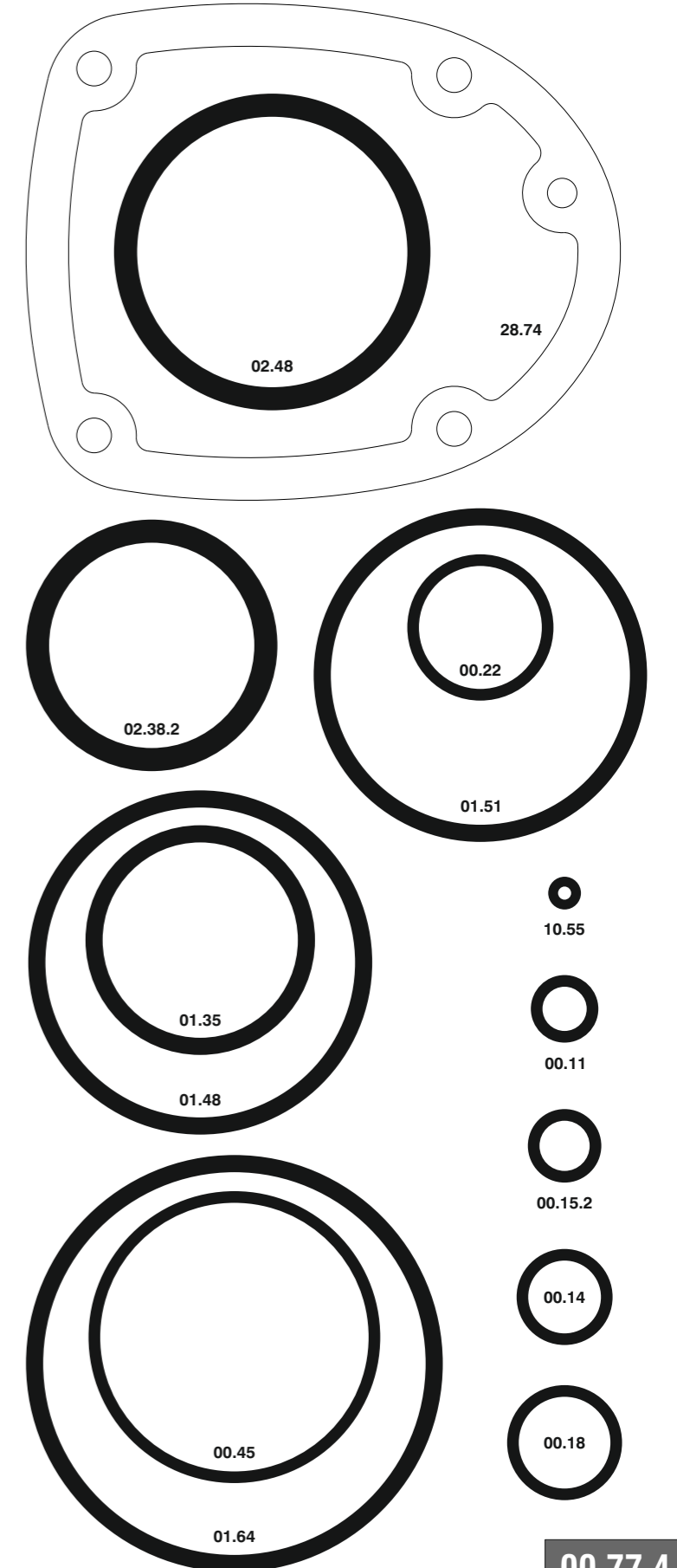


92.740

cod. 1747200

Cod.	Descrizione	Description
00.11	O-Ring	O-Ring
00.14	O-Ring	O-Ring
00.15.2	O-Ring	O-Ring
00.18	O-Ring	O-Ring
00.22	O-Ring	O-Ring
00.45	O-Ring	O-Ring
01.35	O-Ring	O-Ring
01.48	O-Ring	O-Ring
01.51	O-Ring	O-Ring
01.64	O-Ring	O-Ring
02.38.2	O-Ring	O-Ring
02.48	O-Ring	O-Ring
03.00	Dado	Nut
03.30	Dado	Nut
04.00	Dado	Nut
04.05.5	Vite	Screw
04.16Z	Vite	Screw
05.00	Dado	Nut
05.10.1	Vite	Screw
05.20.2	Vite	Screw
05.25	Vite	Screw
05.30	Vite	Screw
06.20.2	Vite	Screw
07.25	Chiave esagonale	Hex. bar wrench
07.30	Chiave esagonale	Hex. bar wrench
07.40	Chiave esagonale	Hex. bar wrench
09.24.1	Anello elastico	Elastic ring
10.55	O-Ring	O-Ring
17.27	Tappo	Inlet cap
21.75	Corpo	Body
22.74	Testa	Head
25.74	Deflettore scarico	Exhaust deflector
26.74	Cilindro	Cylinder
27.70	Anello	Ring
27.74	Anello cilindro	Cylinder ring
28.74	Guarnizione testa	Head gasket
30.75	Pistone	Piston
32.75.4	Ammortizzatore	Bumper
40.74	Valvola completa	Valve assembled
44.73	Guarnizione cilindro	Cylinder gasket
44.74	Ammortizzatore sup.	Upper bumper
45.70	Distanziale	Spacer
50.74	Pulsante completo	Trigger valve assy
51.74	Boccola servovalvola	Servo valve bushing
53.74	Pistone servovalvola	Servo valve piston
54.83	Pulsante	Trigger valve
55.74	Raccordo pulsante	Trigger valve bush
64.77	Guida carrello	Slider guide
64.78	Carter sicura	Safety guard
72.22	Fermo carrello	Slider stop
72.74	Fermo di gomma	Rubber stop
75.65	Sicura	Safety
76.05	Perno	Pin
76.46	Perno molla	Spring pin
77.78	Guida sicura	Safety guide
80.44	Grilletto chiusura	Trigger
81.78	Grilletto comando BF	BF Trigger
86.72	Guida spingipunto	Pusher guide
86.73	Guida perni	Pin guide
86.74	Boccola	Bushing
87.70	Perno porta molla	Spring guide pin
90.41	Molla	Spring
91.73	Molla	Spring
91.77	Molla	Spring
92.73	Molla	Spring
93.74	Molla	Spring
23.70.92	Battente	Driver
54.70.92	Caricatore	Magazine
62.70.92	Carrello	Slider
73.70.92	Spingipunto	Pusher
84.70.90	Controtestina	Nose
94.70.92	Testina	Nose plate
D01	Bocchetta olio	Oiler
D02	Occhiali protettivi	Protective goggles

Guarnizioni - O-Rings - Dichtungen - Joints - Juntae - Δακτύλιος στεγανοποίησης - Vedantes - O-ringen - Contaljar - O-ringar - Tesnenia



92.740

cod. 1747200

Indice di modifica
Upgrade number

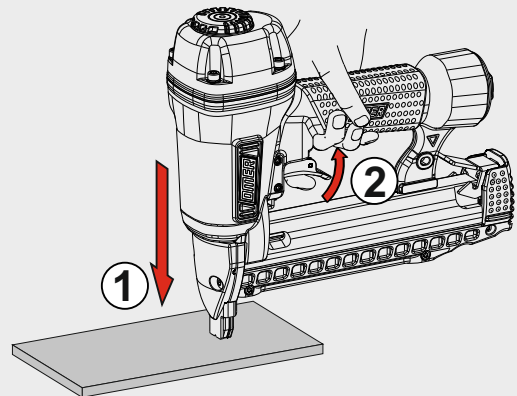
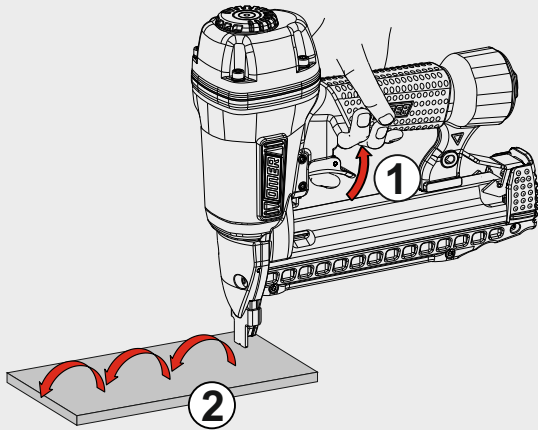
4

Azionamento a contatto

Contact actuation



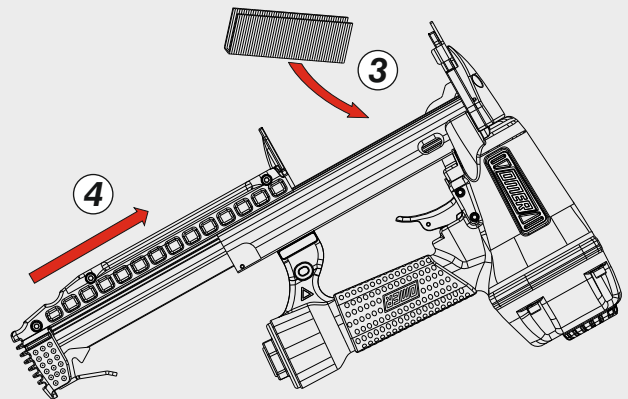
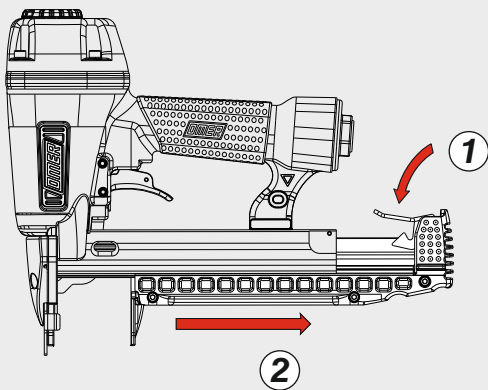
Oppure - Or



Caricamento - Loading - Laden - Chargement - Carga - Γέμισμα - Carregamento - Laden - Yükleme - Laddning - Plnění - Plnenie

Caricamento da sotto

Bottom load magazine



Disincerramento - Jam clearing - Staubeseitigung - Décoincement - Desatascamiento - Απεμπλοκή
Desencravamento - Deblokkering bij vastlopen - Sıkışma giderme - Rensning av igensättningar - Uvolnění - Uvolnenie

