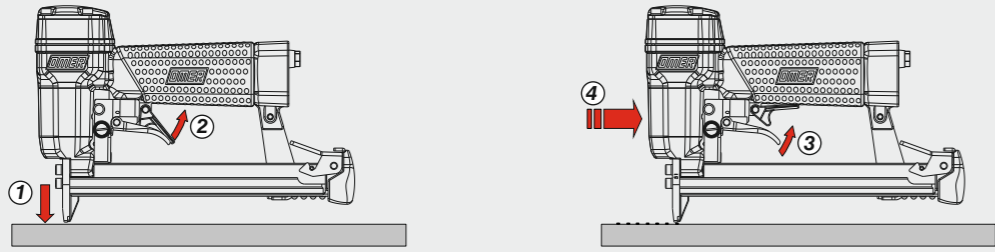
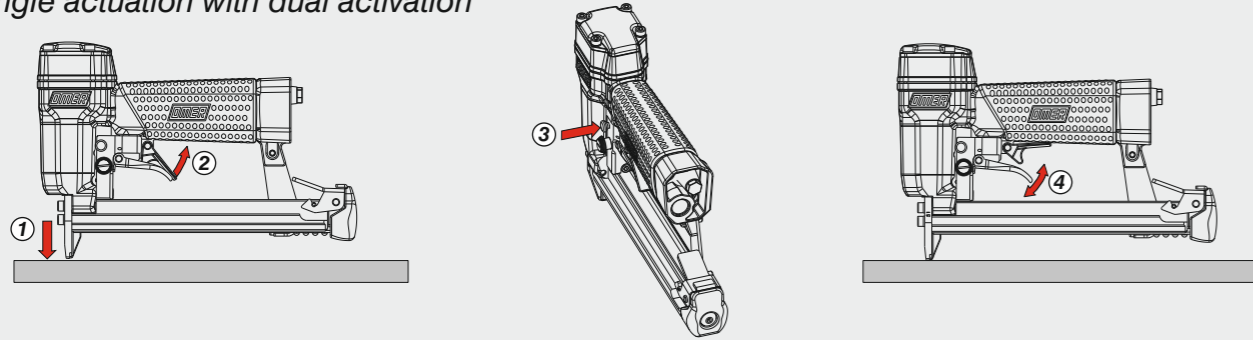


Azionamento continuo con doppia attivazione
 Continual actuation with dual activation

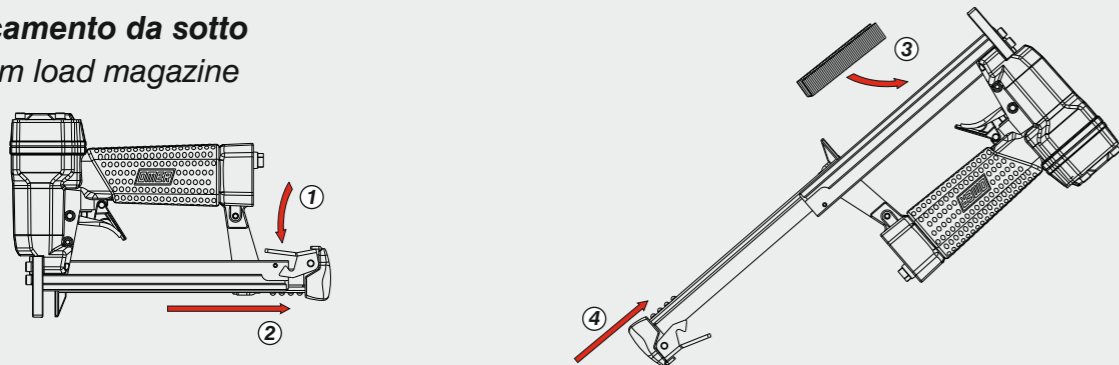


Azionamento singolo con doppia attivazione
 Single actuation with dual activation



Caricamento - Loading - Laden - Chargement - Carga - Γέμισμα - Carregamento - Laden - Yükleme - Laddning - Plnění - Plnenie

Caricamento da sotto
 Bottom load magazine



Disinceppamento - Jam clearing - Staubeseitigung
 Décoincement - Desatascamiento - Απεμπλοκή - Desencravamento
 Deblokkering bij vastlopen - Sıkışma giderme
 Rensning av igensättningar - Uvolnění - Uvolňenie

Regolazioni
Adjustments

Regolazione della velocità
 Speed adjustment

Max 1800 rpm



| | |
|--|----------|
| Manuale d'uso, manutenzione e parti di ricambio | Parte 2 |
| Manual for use, maintenance and spare parts | Part 2 |
| Bedienungs- und Wartungshandbuch sowie Ersatzteilliste | Teil 2 |
| Mode d'emploi, de maintenance et pièces de rechange | Partie 2 |
| Manual de uso, mantenimiento y recambios | Part 2 |
| Εγχειρίδιο χρήσης, συντήρησης και ανταλλακτικών | Μέρος 2 |
| Manual de uso, manutenção e peças sobresselentes | Parte 2 |
| Handleiding voor gebruik, onderhoud en wisselstukken | Deel 2 |
| Kullanım, bakım ve yedek parça kılavuzu | Kisim 2 |
| Användar-, underhålls- och reservdelshandbok | Del 2 |
| Návod k používání a údržbě a náhradní díly | Část 2 |
| Návod na obsluhu, údržbu a náhradné diely | Časť 2 |

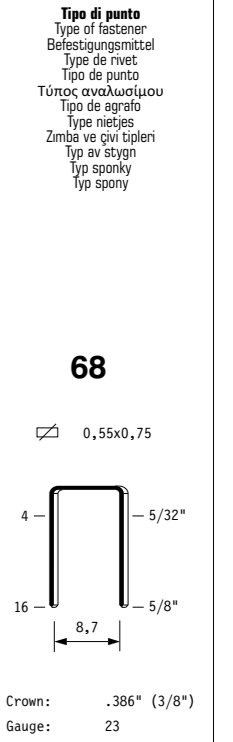


68.16 V

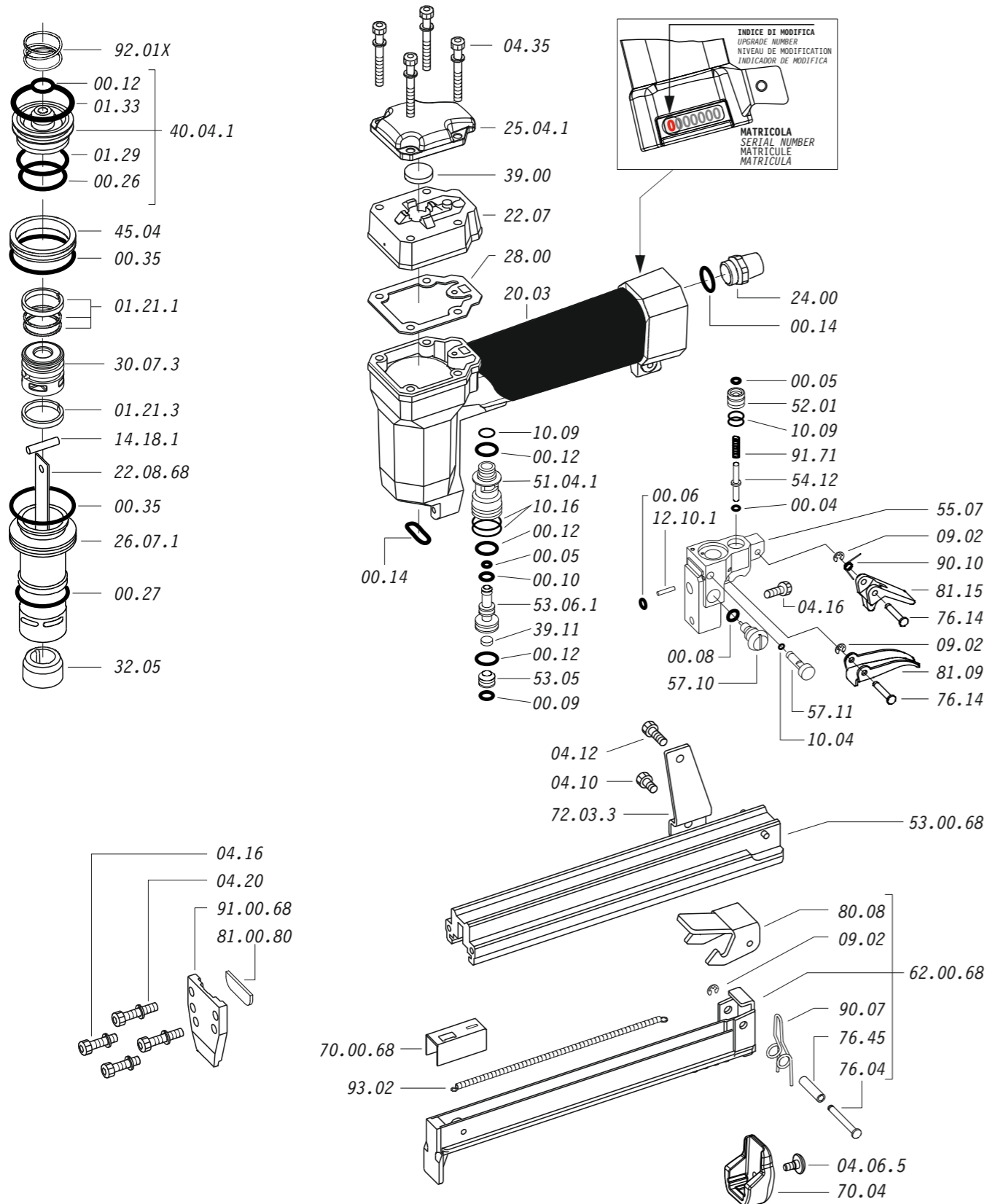
cod. 1154580



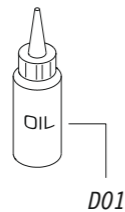
| Dati tecnici Technical data Technische Daten Tehniska data | Caractéristiques techniques Datos técnicos Τεχνικά χαρακτηριστικά Technické údaje | Dados técnicos Technische gegevens Teknik veriler Technické údaje |
|---|--|--|
| Misure impiegabili Lengths Verwendbare Nagellänge Dimensioner som kan användas | Dimensions utiles Medidas de longitud Μήκος Αναλώσιμου Příпустné rozměry | Medidas utilizáveis Toepasbare afmetingen Boy Použitelné rozmery |
| Capacità caricatore n° punti Magazine capacity Magazinkapazität Nägel Magasinkapacitet Antal punkter | Capacité chargeur n° de points Capacidad cargador n° puntos Δυνατότητα γεμιστερα Kapacita zásobníku p. sponek | Capacidade carregador n° pontos Capaciteit magazijn in aantal spijkers Dergi kapasitesi Kapacita zásobníka p. spôn |
| Pressione d'esercizio Operating pressure Betriebsdruck Drifttryck | Pression d'exercice Presión de servicio Πίεση λειτουργίας Pracovní tlak | Pressão de serviço Werkdruk Çalışma basıncı Prevádzkový tlak |
| Consumo aria Air consumption Luftverbrauch Luftförbrukning | Consommation d'air Consumo aire Κατανάλωση αέρα Spotřeba vzduchu | Consumo ar Luchtverbruik Hava tüketimi Spotřeba vzduchu |
| Peso Weight Gewicht Vikt | Poids Peso Βάρος Hmotnost | Peso Gewicht Ağırlık Hmotnost |
| Dimensioni Dimensions Abmessungen Dimensioner (AxBxH) | Dimensions Dimensiones Διαστάσεις Rozměry | Dimensões Afmetingen Boyutlar Rozmery |
| EN 12549 :2009 EN ISO 4871 :2009 Pressione sonora in pos. operatore Sound pressure in operator's position Schalldruck am Arbeitsplatz Ljudtryck på operatörsplatsen | Pression sonore poste Opérateur Presión sonora en la pos. del operador Ηχητική πίεση στη θέση του χειριστή Akustický tlak v místě obsluhy | Pressão sonora na posição Operador Geluidsdruk op de werkplaats Οπερατόρ ποζιسیونδα ses basıncı Akustický tlak v mieste obsluhy |
| EN 12549 :2009 EN ISO 3746 :2011 EN ISO 4871 :2009 Potenza sonora emessa Sound power emitted Emitierte Schalleistung Avgiven ljudeffekt | Puissance sonore émise Potencia sonora emitida Εκπεμπόμενη ηχητική ισχύς Emitovaný akustický tlak | Potência sonora emitida Geëmitteerd geluidsvermogen Çıkan ses gücü (ses desibeli) Výstupný akustický výkon |
| CEN ISO/TS 8662-11 :2006 EN ISO 5349-2 :2004 EN 12096 :1999 Emissione vibratoria sull'impugnatura Vibratory emissions on handle Vibrationsemission am Griff Vibrationsemission på handtaget | Émission vibratoire sur la prise en main Emisión de vibraciones en la empuñadura Εκπεμπόμενες δονήσεις στη λαβή Emise vibrací na rukovět | Emissão vibratória na empunhadura Trillingsemissie op de handgreep Tutamak üzerinde vibrasyon emisyonları Emisie vibrácií na rukoväti |



1154580_6816V_6_rev22_28/02/2025_MH



Dotazioni - Equipment - Ausstattung - Outillage - Dotaciones - Εξοπλισμός
Dotações - Uitrusting - Donanımlar - Utrustning - Vybavení - Výchava



68.16 V

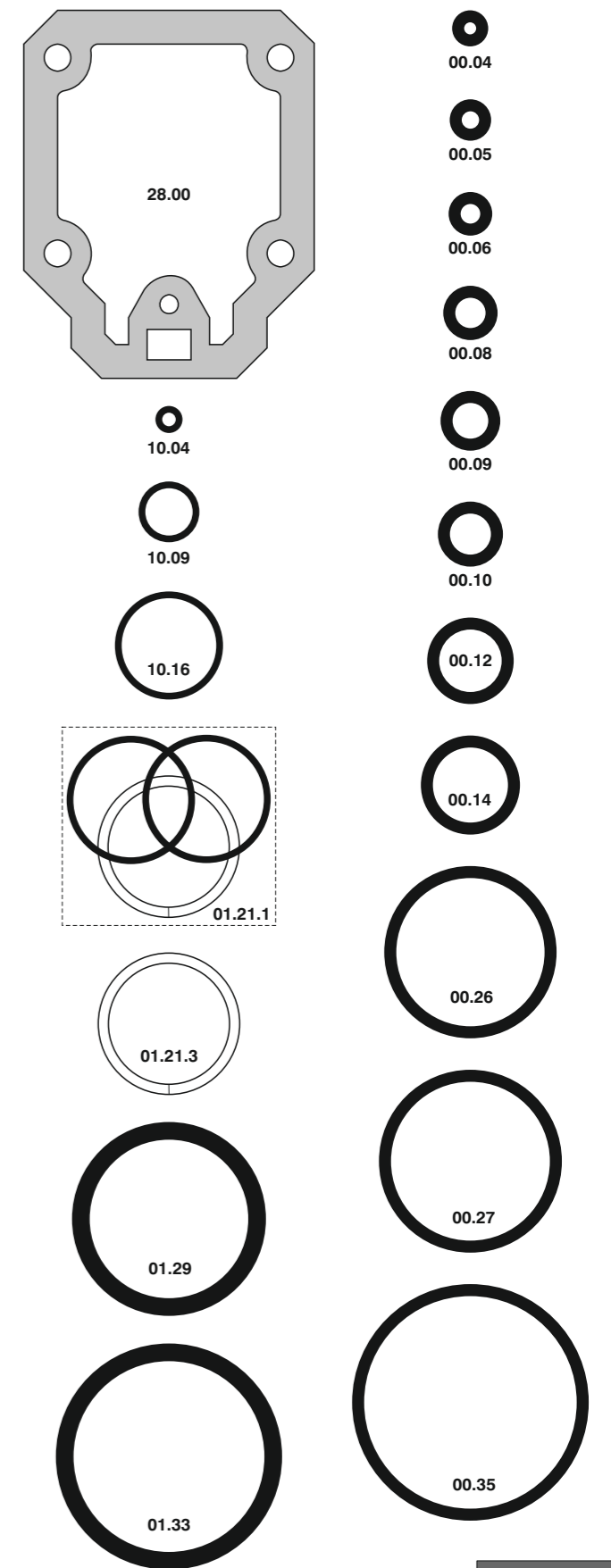
cod. 1154580

| Cod. | Descrizione | Description |
|----------|----------------------|-------------------|
| 00.04 | O-Ring | O-Ring |
| 00.05 | O-Ring | O-Ring |
| 00.06 | O-Ring | O-Ring |
| 00.08 | O-Ring | O-Ring |
| 00.09 | O-Ring | O-Ring |
| 00.10 | O-Ring | O-Ring |
| 00.12 | O-Ring | O-Ring |
| 00.14 | O-Ring | O-Ring |
| 00.26 | O-Ring | O-Ring |
| 00.27 | O-Ring | O-Ring |
| 00.35 | O-Ring | O-Ring |
| 01.21.1 | Guarnizione | Gasket |
| 01.21.3 | Guarnizione | Gasket |
| 01.29 | O-Ring | O-Ring |
| 01.33 | O-Ring | O-Ring |
| 04.06.5 | Vite | Screw |
| 04.10 | Vite | Screw |
| 04.12 | Vite | Screw |
| 04.16 | Vite | Screw |
| 04.20 | Vite | Screw |
| 04.35 | Vite | Screw |
| 07.30 | Chiave esagonale | Hex. bar wrench |
| 09.02 | Anello elastico | Elastic ring |
| 10.04 | O-Ring | O-Ring |
| 10.09 | O-Ring | O-Ring |
| 10.16 | O-Ring | O-Ring |
| 12.10.1 | Spina | Pin |
| 14.18.1 | Spina | Pin |
| 20.03 | Corpo | Body |
| 22.07 | Testa | Head |
| 24.00 | Silenziatore | Silencer |
| 25.04.1 | Deflettore | Exhaust deflector |
| 26.07.1 | Cilindro | Cylinder |
| 28.00 | Guarnizione | Gasket |
| 30.07.3 | Pistone | Piston |
| 32.05 | Ammortizzatore | Bumper |
| 39.00 | Guarnizione scarico | Exhaust gasket |
| 39.11 | Guarnizione servov. | Valve gasket |
| 40.04.1 | Valvola completa | Valve ass'y |
| 45.04 | Anello valvola | Ring |
| 51.04.1 | Cilindro servovalv. | Valve cylinder |
| 52.01 | Boccola pulsante | Tiger valve bush |
| 53.05 | Pistoncino | Piston |
| 53.06.1 | Pistone servovalvola | Valve piston |
| 54.12 | Pulsante | Trigger valve |
| 55.07 | Corpo servovalvola | Valve body |
| 57.10 | Regolatore | Regulator |
| 57.11 | Interruttore | Switch |
| 70.04 | Protezione | Guard |
| 72.03.3 | Reggicaricatore | Support |
| 76.04 | Perno | Pin |
| 76.14 | Perno | Pin |
| 76.45 | Perno molla | Pin |
| 80.08 | Grilletto chiusura | Trigger |
| 81.09 | Grilletto comando | Trigger |
| 81.15 | Controgrilletto | Trigger |
| 90.07 | Molla | Spring |
| 90.10 | Molla | Spring |
| 91.71 | Molla | Spring |
| 92.01X | Molla | Spring |
| 93.02 | Molla | Spring |
| 22.08.68 | Battente | Driver |
| 53.00.68 | Caricatore | Magazine |
| 62.00.68 | Carrello | Slider |
| 70.00.68 | Spingipunto | Pusher |
| 81.00.80 | Controtestina | Nose |
| 91.00.68 | Testina | Nose plate |
| D01 | Bocchetta olio | Oiler |

68.16 V

cod. 1154580

Guarnizioni - O-Rings - Dichtungen - Juntas - Δακτύλιος στεγανοποίησης
Vedantes - O-ringen - Contalar - O-ringar - Тěснeні - Tesnenia



Indice di modifica
Upgrade number

6